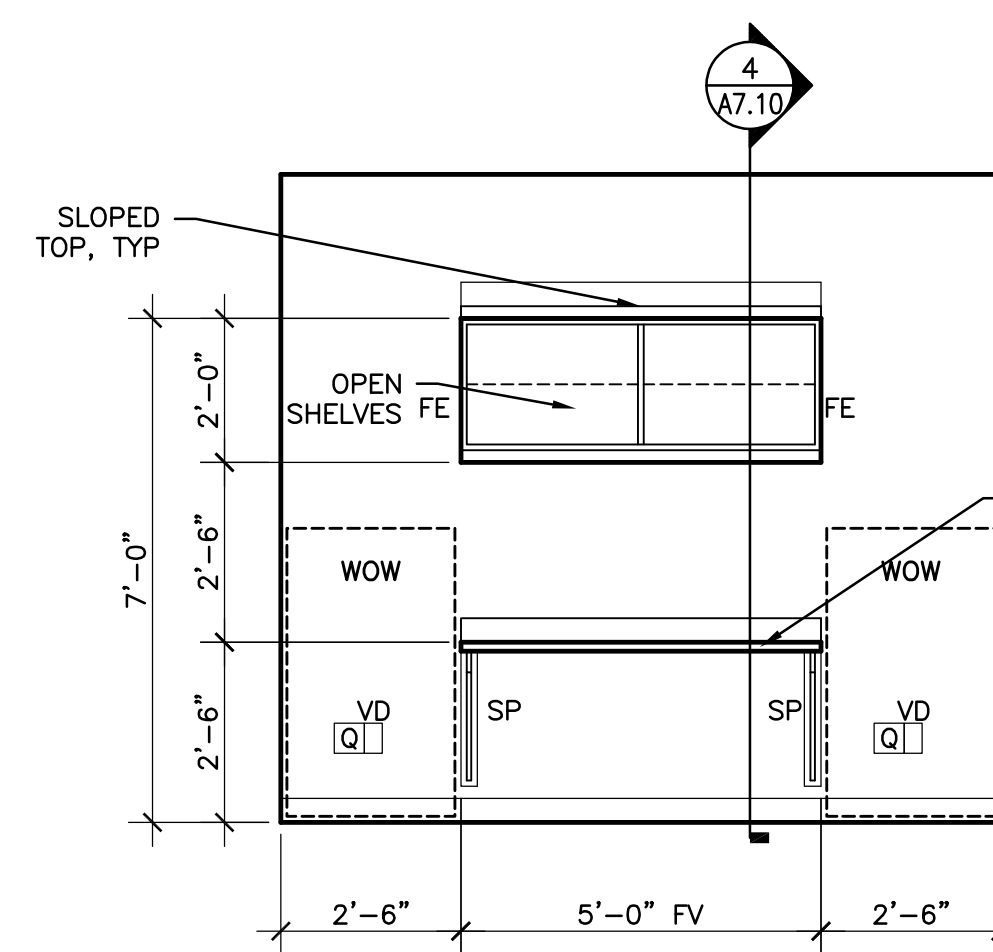
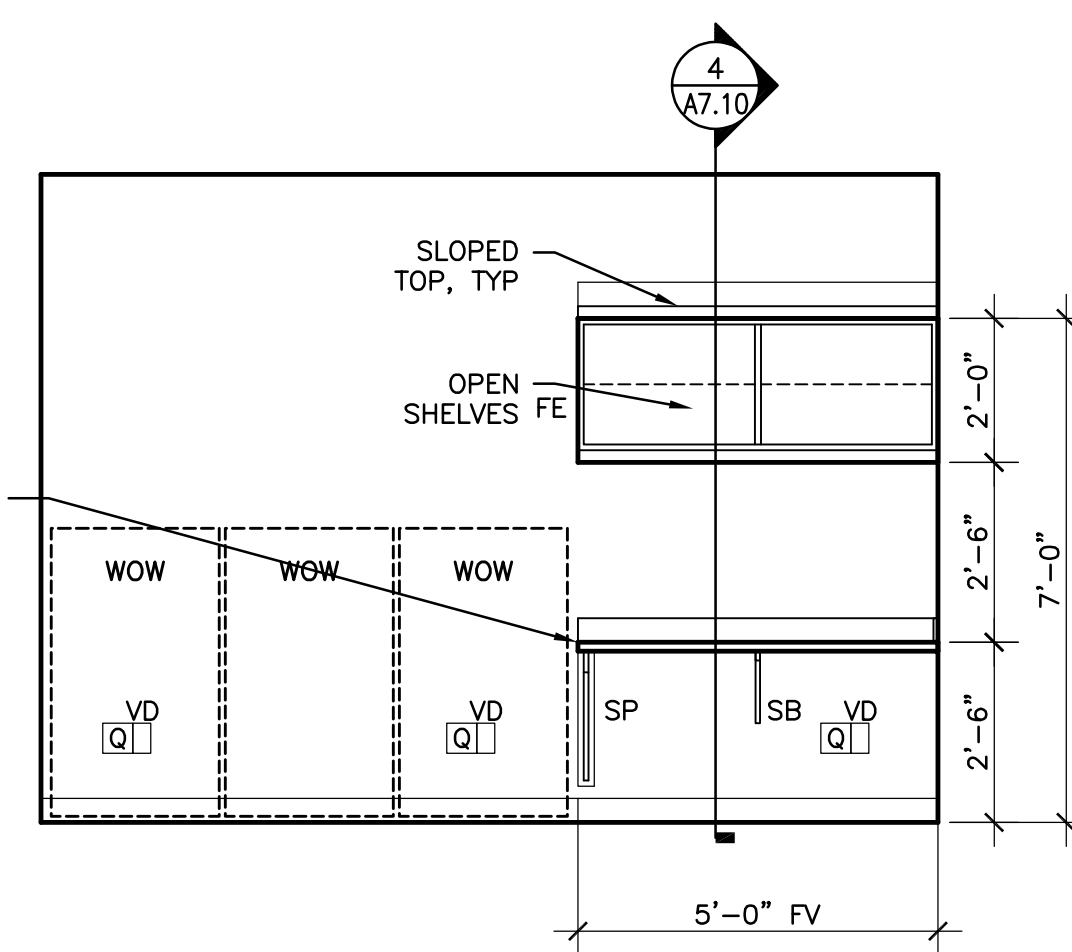


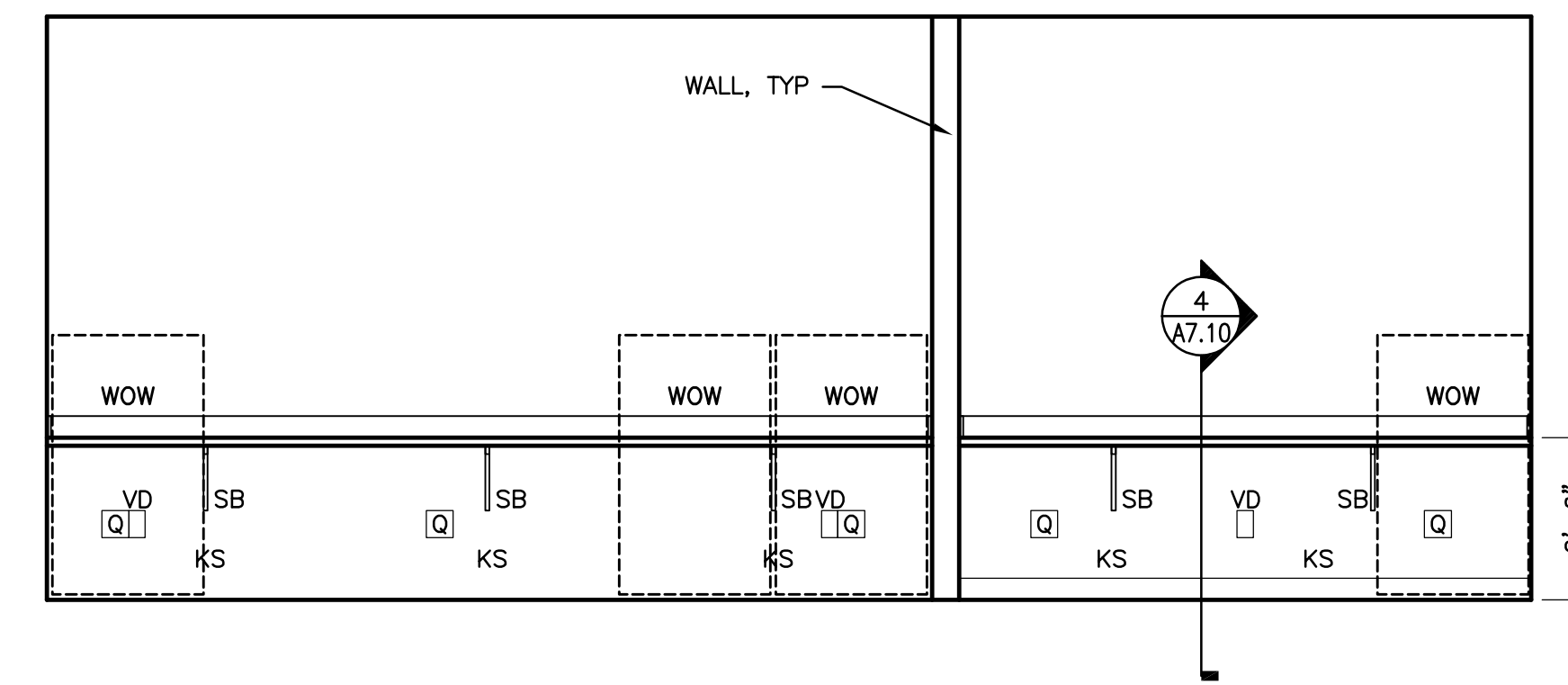
22 NURSE WORK AREA - RM. #411



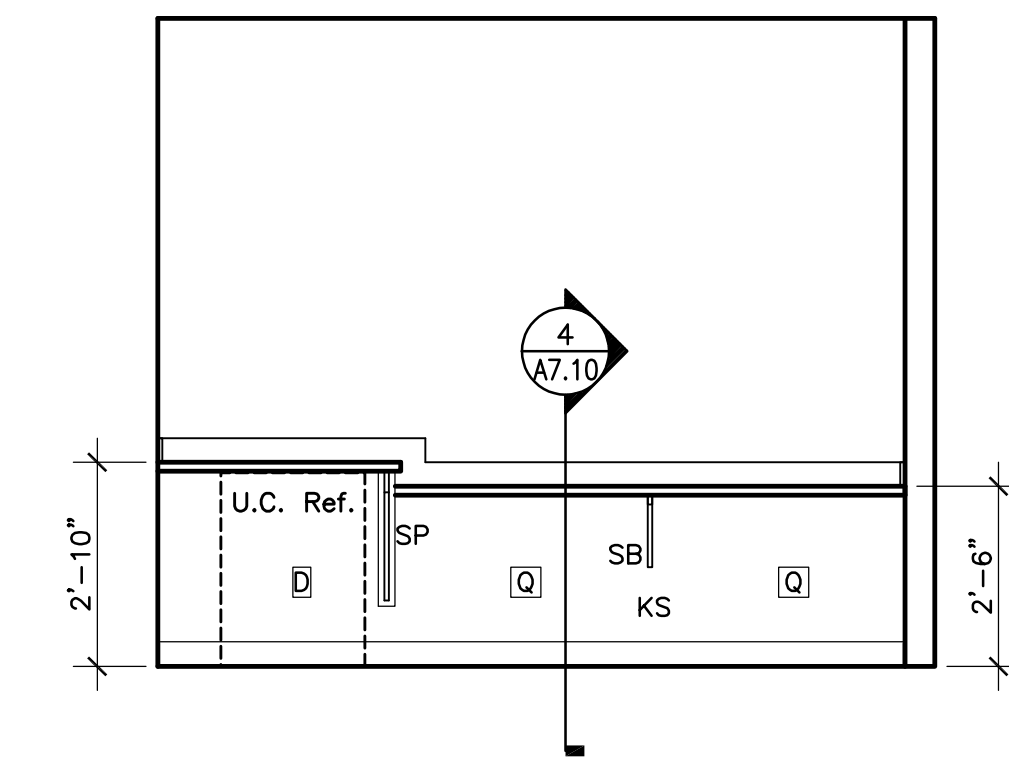
21 NURSE WORK AREA - RM. #411



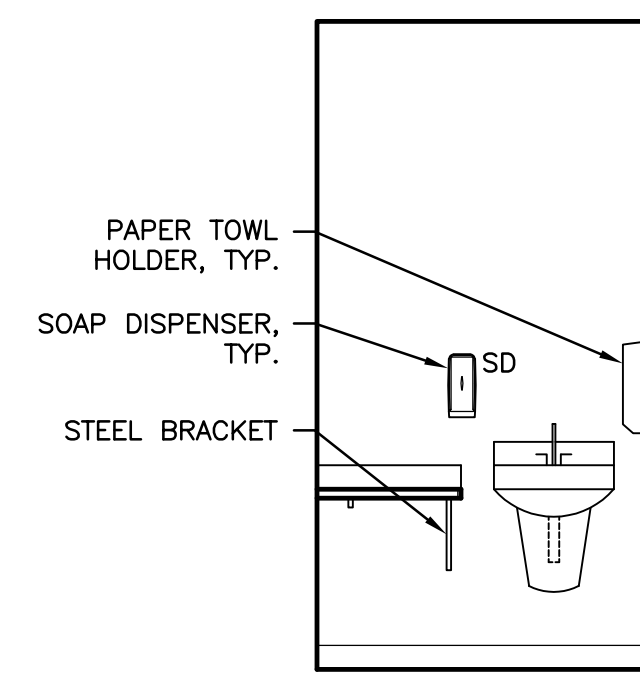
20 NURSE WORK AREA - RM. #411



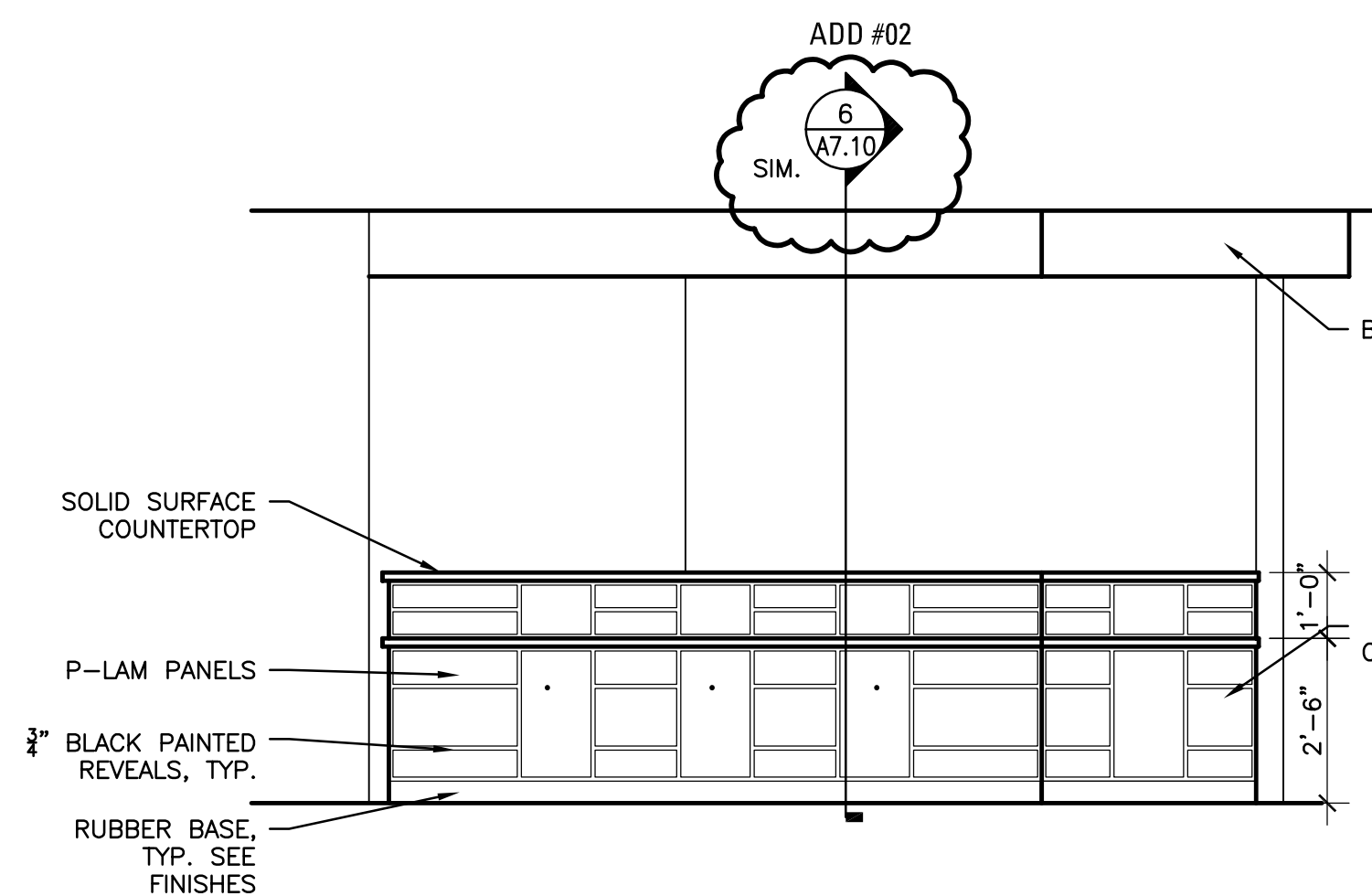
19 PROV. WORK AREA - RM. #410



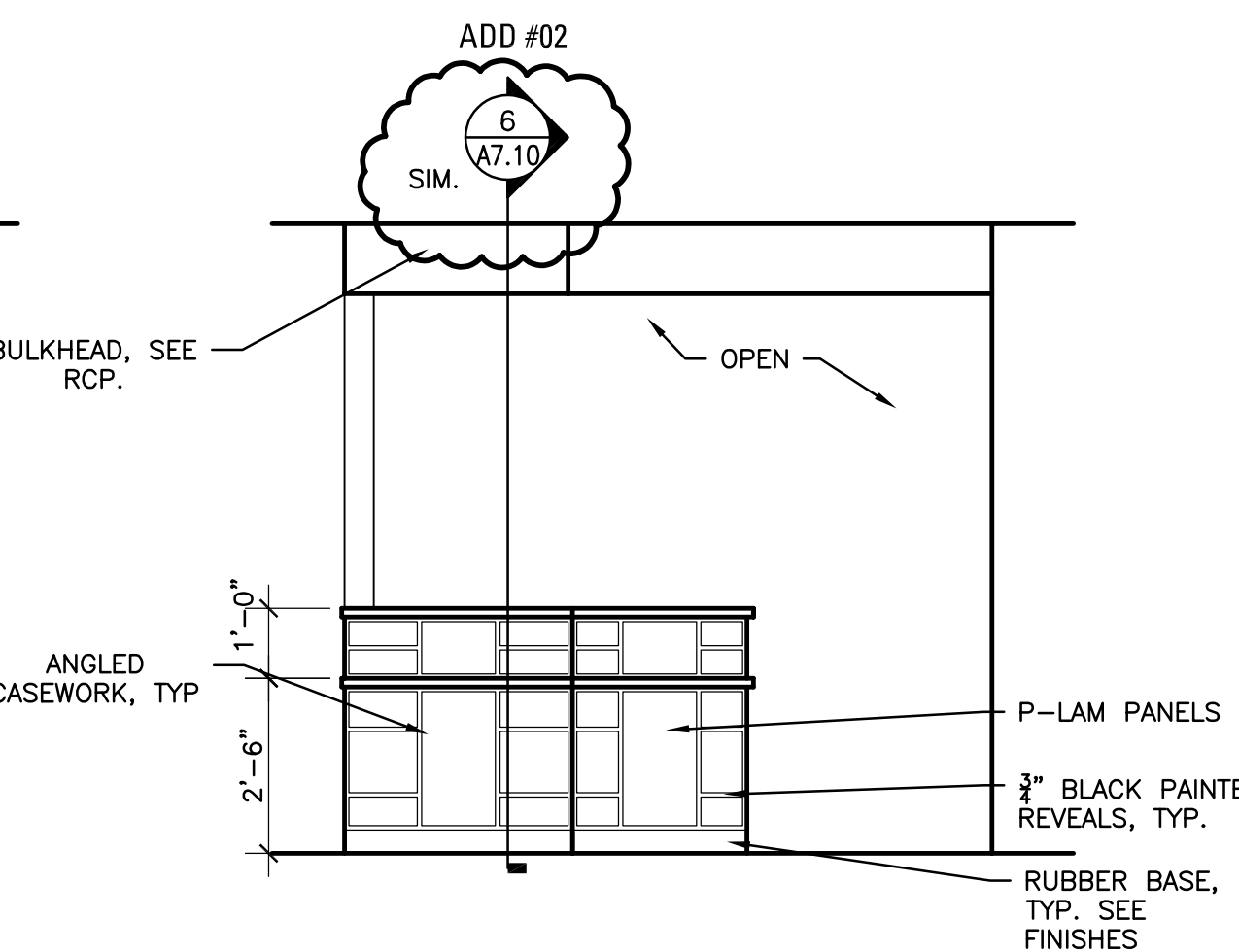
18 HALLWAY - RM. #492



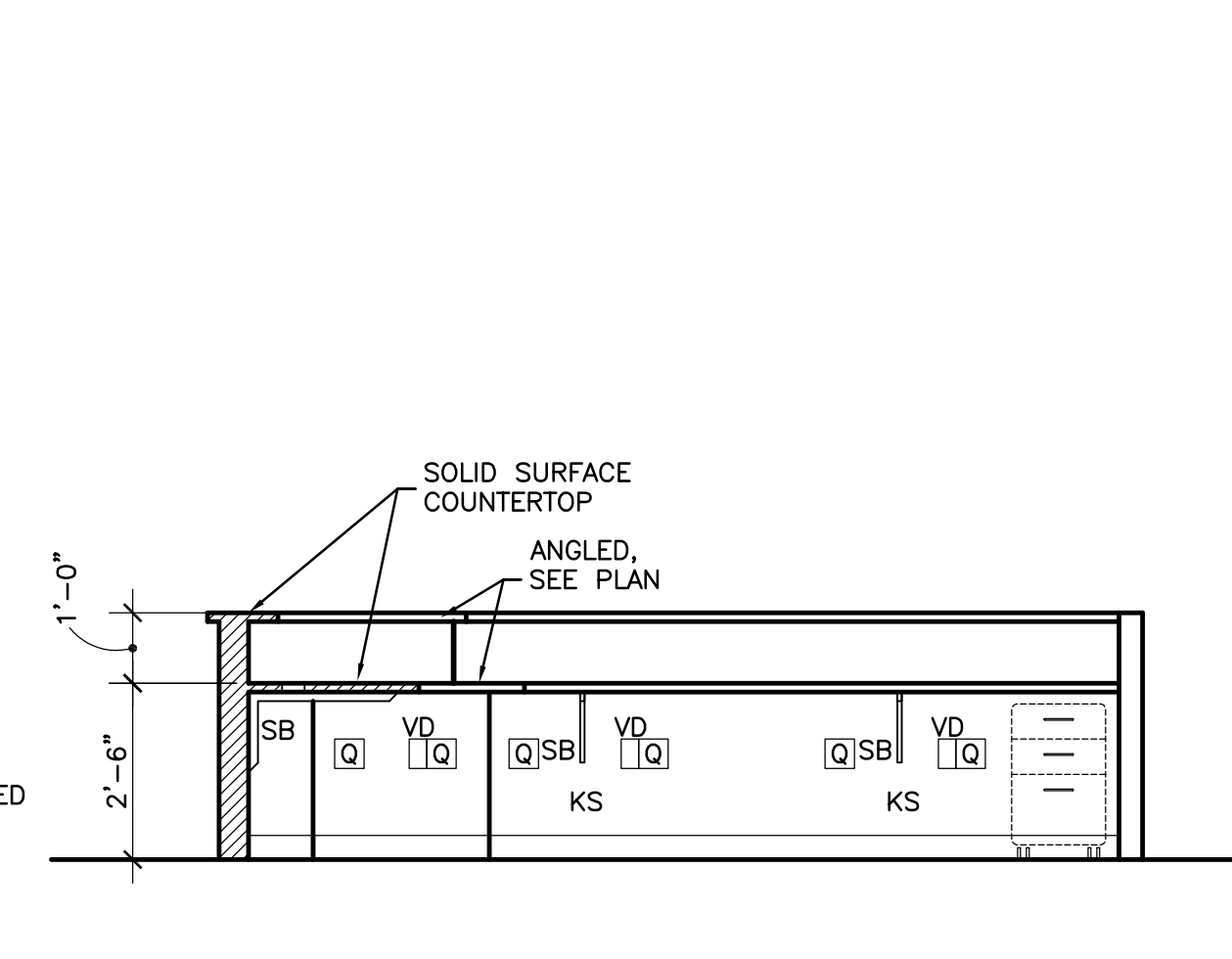
27 BATHROOM SINK - RM. #413,414,419



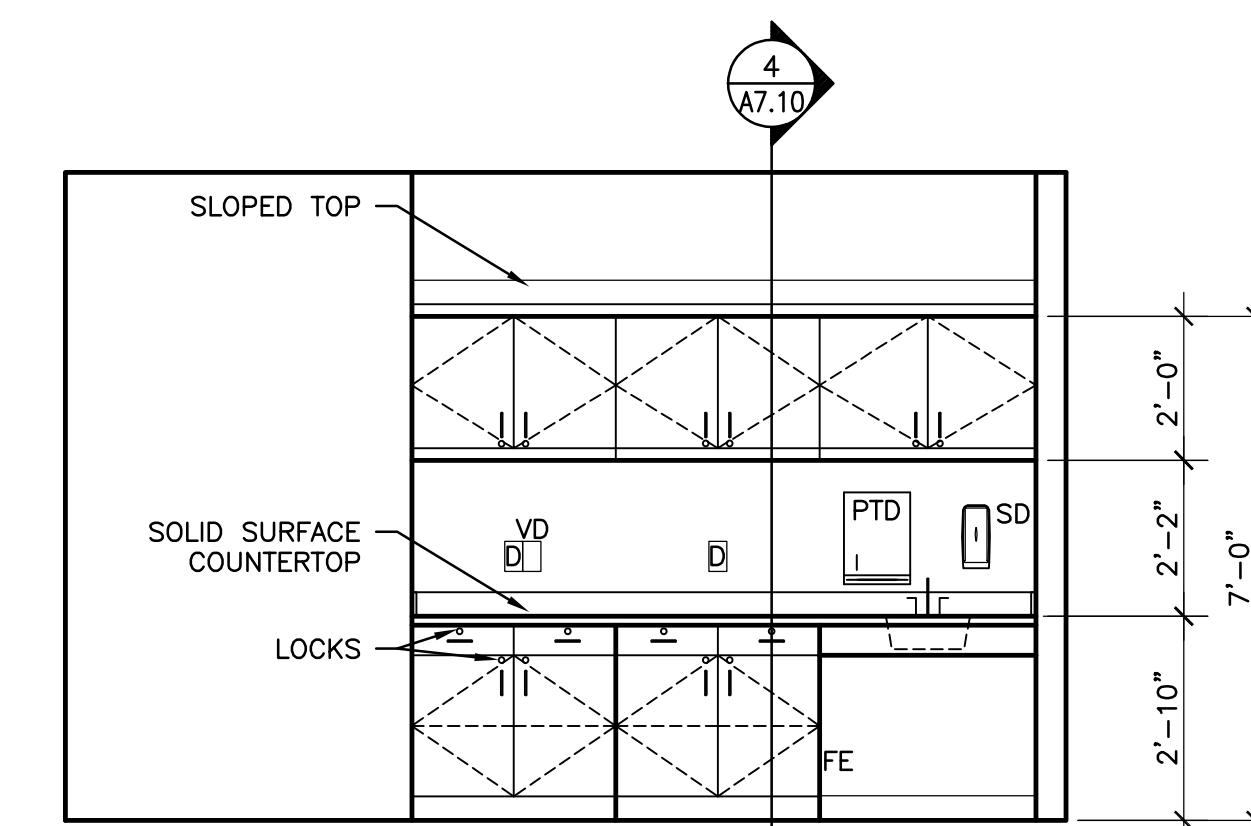
26 DISCHARGE



25 DISCHARGE



24 DISCHARGE



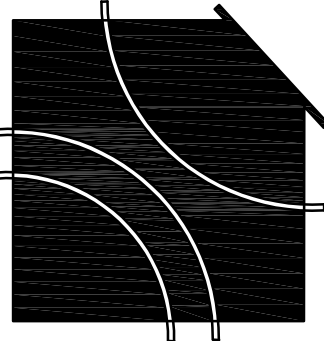
23 DISCHARGE

CASEWORK LEGEND/NOTES

FE	- FINISHED END	VD	- VOICE/DATA OUTLET
SB	- SUPPORT BRACKET	KS	- KNEE SPACE
FV	- FIELD VERIFY	PLAM	- PLASTIC LAMINATE
SP	- SUPPORT PANEL	D	- DUPLEX ELEC. OUTLET
SD	- SOAP DISPENSER	Q	- QUAD ELEC. OUTLET
		PD	- PAPER TOWEL DISPENSER

- PLAM COUNTERTOPS ARE TO HAVE PVC EDGE BANDING. OUTSIDE CORNERS OF TYP. COUNTERS TO HAVE 2" RADIUS. OUTSIDE CORNERS OF TRANSACTION COUNTERS TO HAVE 1" RADIUS.
- CASEWORK IS PLAM CLAD, U.N.O.
- PROVIDE GROMMETS FOR ALL VOICE/DATA, & POWER OUTLETS LOCATED BELOW COUNTERS.
- PROVIDE SUPPORT BRACKETS AS REQUIRED FOR PROPER SUPPORT.
- FIELD VERIFY ALL DIMENSIONS PRIOR TO FABRICATION.
- SYNTHETIC WOOD LAMINATE TO HAVE GRAIN IN VERTICAL DIRECTION U.N.O. DRAWER FRONTS TO HAVE HORIZONTAL GRAIN DIRECTION.
- SOLID SURFACE COUNTERTOPS ARE TO HAVE 1/4" ROLLED EDGES.
- COORDINATE INSTALLATION HEIGHT OF ALL CABINETS WITH LIP OF SINK TO ENSURE COMPLIANCE WITH ADA/ANSI.
- INTERIORS OF EXPOSED CABINETS (WITHOUT DOORS) ARE TO RECEIVE PLAM FINISHES TO MATCH EXTERIOR UNLESS NOTED OTHERWISE.

JJCA



Freestanding Medical Office Building Buildout for:
Sullivan County Community Hospital
 Sullivan, Indiana

Johnson Johnson
 Crabtree Architects P.C.
 4551 Transcend Parkway
 Nashville, TN 37204
 615.837.0656
 615.837.0657



Sheet Re-Issue Log

(Individual revisions clouded and labeled within each sheet)

ADD #02 03/22/2024

PROJECT NUMBER
23987.02
 DATE
February 28, 2024

A7.2
 CASEWORK
 ELEVATIONS